



SOLAR STIK™

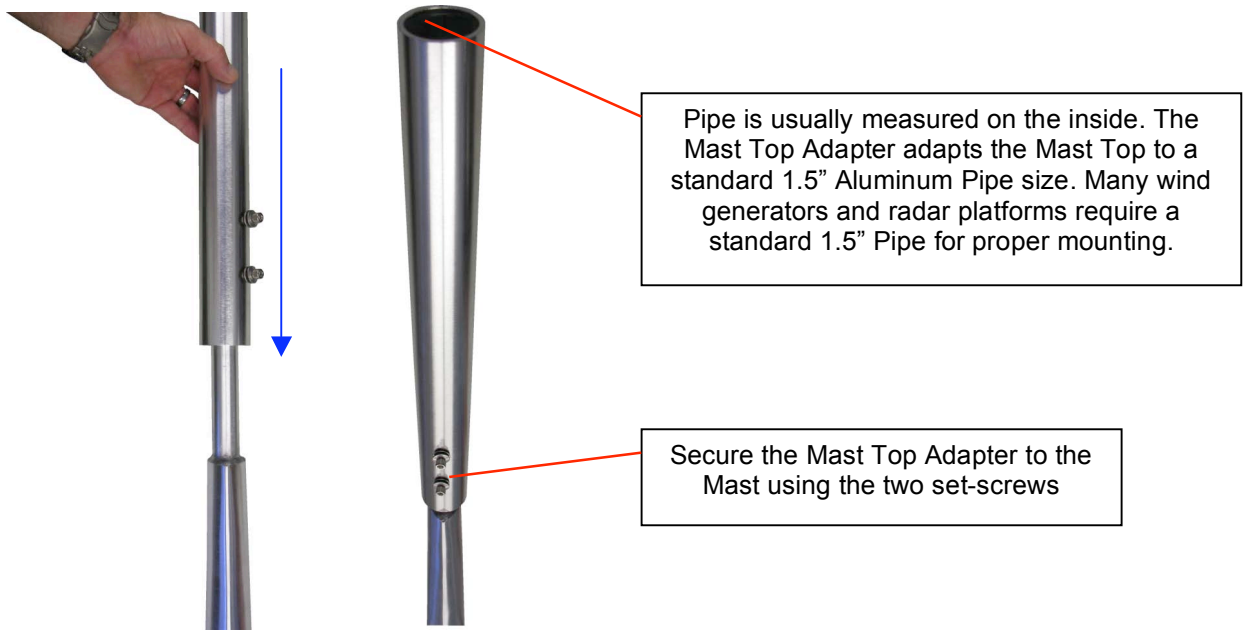
MAST TOP ADAPTER



OVERVIEW

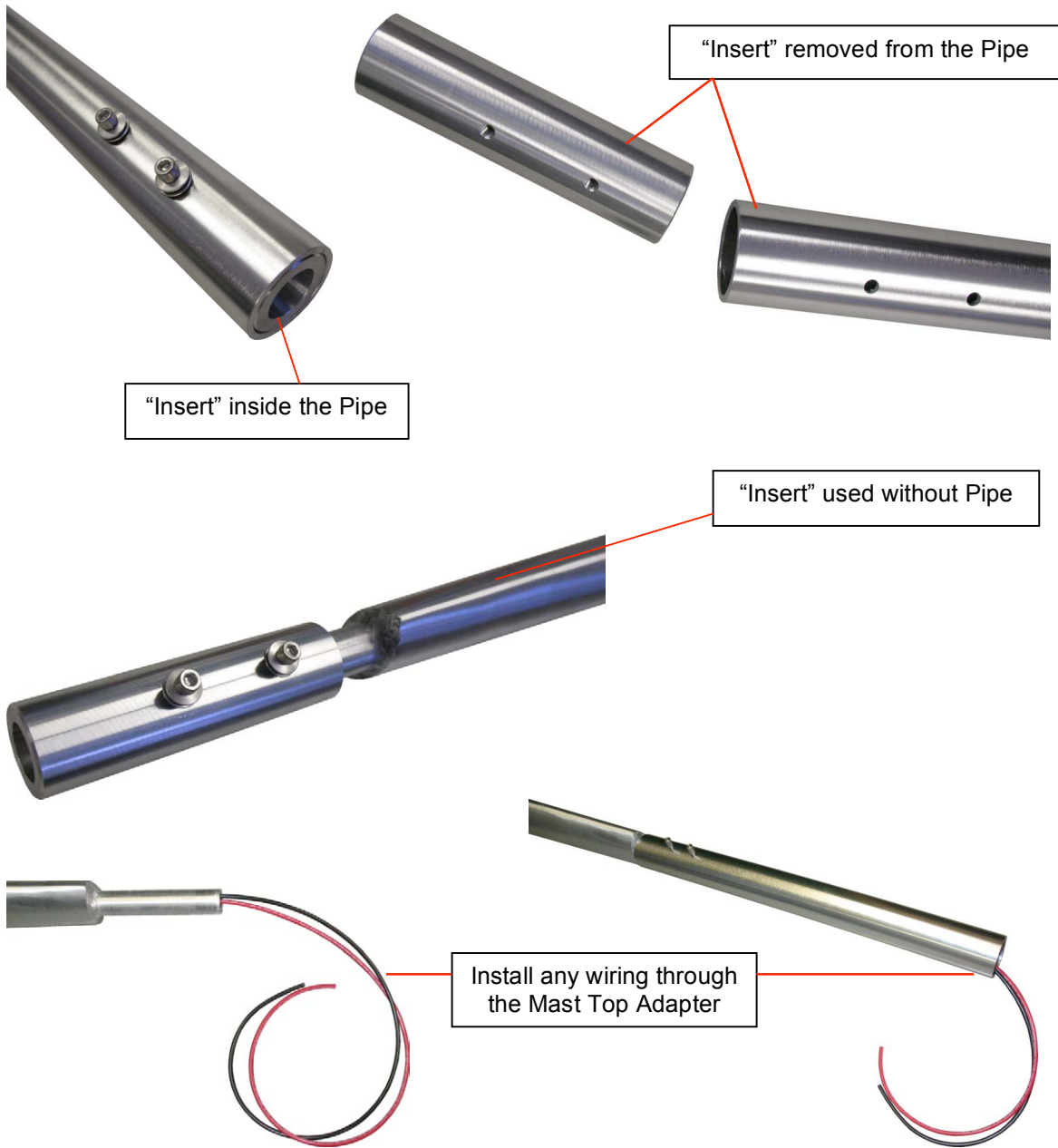
The Mast Top Adapter is a multi- purpose mount that is designed to adapt the top of the Solar Stik™ Mast to a myriad of different functions. Located at the top of the Solar Stik™ Mast is a mount that is 5 inches high and has an **outside diameter** (O.D.) of 1 inch.

The Mast Top Adapter slides over the existing 1" O.D. mount and adds as much as 20 inches of height to the Mast. It also increases the mount's **outer diameter** to 1.9".



If a shorter Adapter is desired, the Adapter can be cut to length using ordinary cutting tools.

The Mast Top Adapter is composed of two parts: The Adapter Insert and the 1.5" Pipe Extension. These two parts can be used independently from one another to support different roles.



⊗ Installation Precautions:

If the Mast Top Adapter is utilized on a Marine System, additional weight or torque may be experienced in the Deck Mount or Transom Mount. Strengthening and/or reinforcement of the Mount may be required.

Solar Stik™ Inc. will not be held liable for improper installation or any damage to corresponding equipment as a result of poor installation.

TECHNICAL SUPPORT LINE: 800-793-4364 (available weekdays 7AM to 7PM EST and Sat - Sun 9AM to 4PM EST)

ADDRESS: Solar Stik™ R&D Facility
226 1/2 West King Street
Saint Augustine, Florida 32084

For more information, visit the website WWW.SOLARSTIK.COM

041008