



SOLAR STIK®

24VDC Li Power Pak 2400

Item # 21-0202306

Overview

Powerful

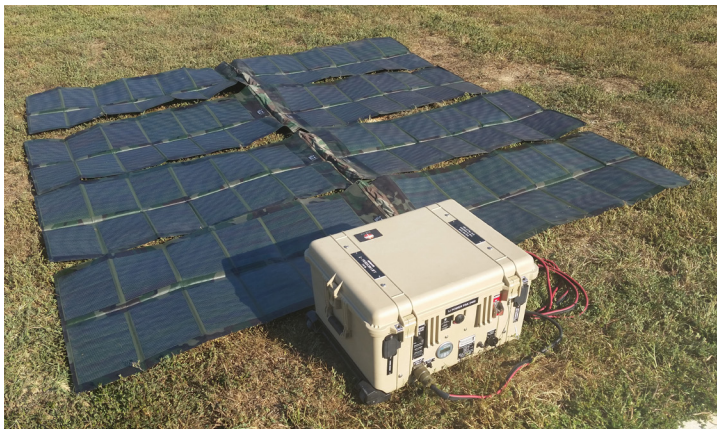
The 24VDC Li Power Pak 2400 is a portable battery and power management system that stores up to 2.4 kWh of energy. It was designed as a highly mobile and functional platform that provides 24 VDC power for a wide variety of applications.

Durable

The Li Power Pak 2400 is ruggedized for extreme environmental conditions and built to withstand severe impacts.

Scalable

If additional energy storage is required, battery capacity can be increased by adding Expander Paks using Plug & Play connections.



Features

- 2.4 kWh of storage
- Scalable system architecture
- Transportable by land, sea, and cargo aircraft
- Extremely low self-discharge rate
- Capable of over 3000 cycles
- Durable and weather resistant
- Plug & Play

Why Solar Stik?

Modular designs
Scale system to needs
Field-tested
24/7 Tech Support



© 2016 Solar Stik, Inc.
All Rights Reserved. Solar Stik is a registered trademark of Solar Stik, Inc.

SS20160808

800.793.4364
info@solarstik.com
www.solarstik.com



SOLAR STIK®

24VDC Li Power Pak 2400

Item # 21-0202306

Transportation

Transportation Class	Class 9 Hazardous
Cargo Aircraft Shipping	UN3481 - LiFePO ₄ net weight 35 kg
Harmonized Tariff Code	8507.80.0000

Connections

DC	<ul style="list-style-type: none"> (2) 24 VDC Lithium Inter-Connect port (cable storage on faceplate inside case) (1) Solar input
Battery Data	External RJ-45 Ethernet port

Charging

Charge Rate	12 A to 28.8 VDC @ temperature range 32 °C to 113 °C
Fast Charge Rate	20 A @ 25 °C (Charge rate can be up to 50 A; however, a charge rate over 20 A may reduce cycle life.)

Weights and Dimensions

Dimensions	24.76 x 13.90 x 19.57 in (62.9 x 35.3 x 49.7 cm)
Weight	110 lb (49.9 kg)



General

Energy Storage	2.4 kWh
Energy Density	73 Wh/kg
Battery	Lithium iron phosphate (LiFePO ₄)
Operating Voltage	24.0–28.8 VDC
Amp Hour	100 Ah
Average Voltage	25.6 VDC
Max Discharge	100 A continuous
Self-Discharge	<5% per month
Cycle Life	≥3000 Cycles @ 1C to 80% of initial capacity
Memory	No memory effect
Controls	<ul style="list-style-type: none"> Automatic battery management system (BMS) Blue Sky Energy Solar Boost MPPT 15-amp three-stage solar charge control
Construction	<ul style="list-style-type: none"> Pelican 1620 case Built to MIL-810G standards
User Interface	<ul style="list-style-type: none"> Cycle counter LED display Victron Energy BMV700 battery monitor (Display volts, amps/hours, state of charge, time to go, kWh discharged, kWh charged) Air-cooled exhaust with filtered intake vent
Certifications	CE testing is pending
Warranty	1-year limited warranty of materials and workmanship

Safety

Breakers	<ul style="list-style-type: none"> 50 A master circuit breaker supports max load and charge rate of 1200 W 1 A thermal breaker (exhaust fan protection) 3 A inline mini blade fuse (cycle counter protection; internal) 30 A thermal breaker (solar charge controller protection)
Overvoltage	29.2 V
Undervoltage	21.6 V
Overdischarge Current	120 A
Battery Fuse	175 A UL rated

Environmental Operation

Operating Temperature	-25 °C to +65 °C (-13 °F to +149 °F)
Charge Temperature	+5 °C to +45 °C (+41 °F to +113 °F)
Storage Temperature	-30 °C to +70 °C (-22 °F to +158 °F)
Humidity	0 to 95% RH noncondensing

